

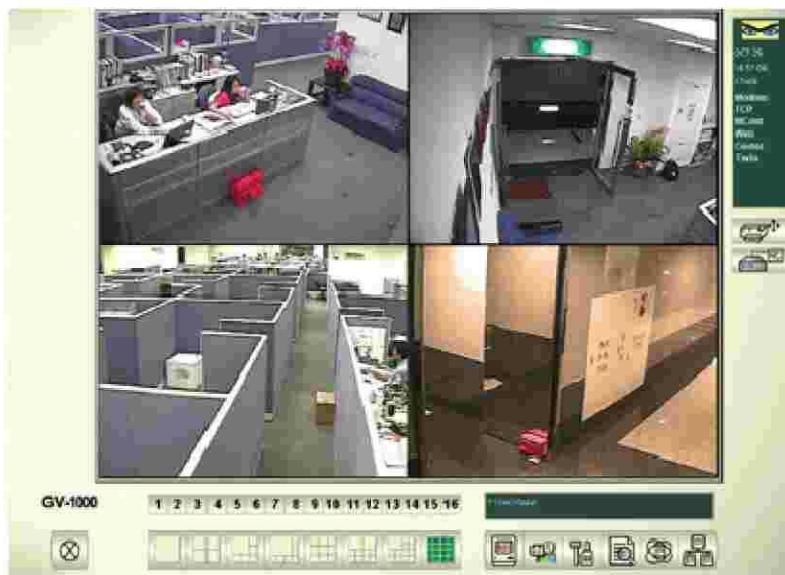
**SOUTHERN  
BANK  
SUPPLIES**

**DIGITAL  
VIDEO  
SYSTEMS**

**DVS16/540  
DVS16/1040  
RAID/STANDARD**



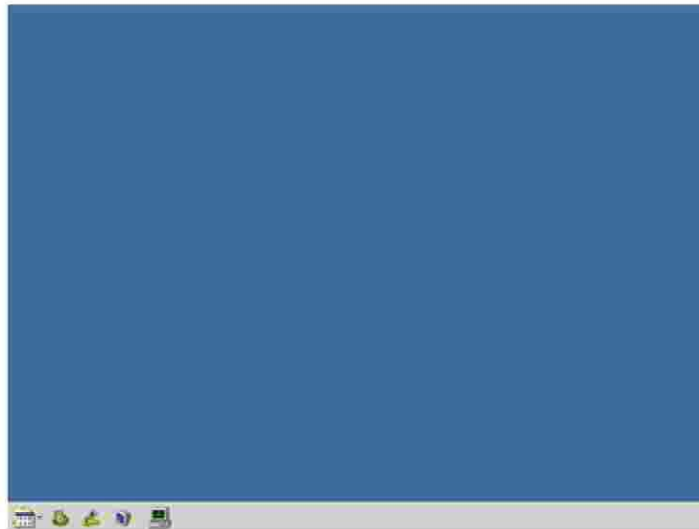
GeoVision's GV-Series is a PC based, multi-channel video surveillance system that utilizes the most advance digital video compression technologies to bring you the highest picture quality and video performance. The GV-Series product range starts from our entry level GV-250 to the flagship GV-1000. Up to 16 cameras can be connected and view live on a local monitor screen or thru TCP/IP network. Video can be recorded basing on specifiable schedules or motion detection. You can store video clips in HDD or any optical storage device by



### New Feature Highlights

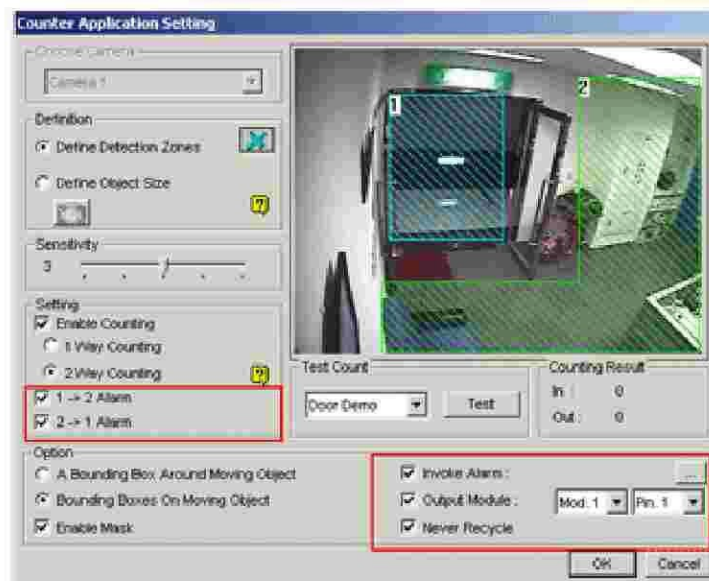
#### Unattended and missing object detection

You may set the system so that when an object is left unattended for a set period of time at the surveillance scene, the system immediately sends alerts to proper authorities for prompt action. Another function offered by this feature is Missing Object Detection - when an object is missing from the surveillance scene for a set period of time, the system also sends out alerts.



### Windows Lockup

Secure your PC while away from workstation. You may lock up the Windows Desktop by launching a customized GV-Desktop, under which operators are limited to run only GV-systems and the selected programs. When your PC is applied to this feature, the keyboard loses its control to Windows. For example, the function such as Ctrl+Alt+Del is disabled.



Alarm on objects passing between predefined regions



#### Object tracking and zooming

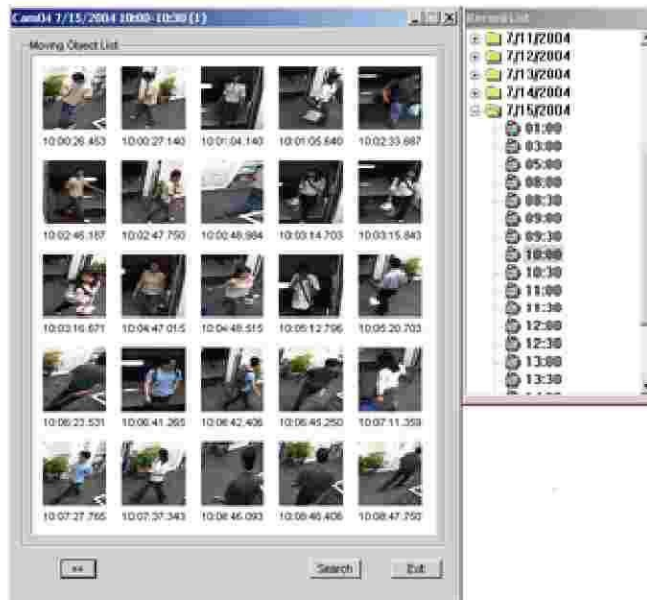
The PTZ dome automatically tracks and zooms in on an object until it leaves the surveillance scene.

(Note: This feature requires one stationary camera and one PTZ dome equipped with auto tracking fea-



#### E-Map

E-map displays the monitoring area on an electronic map, where operators can easily locate cameras, sensors and alarms. The e-map may be set to pop up with flashing icons, indicating a camera or an I/O device is being triggered.



### Object Index

You may quickly find a desired video file at a glance! Compared to previous version where you may try your luck guessing on a date to spot a specific event, you may now glance at frames of each video file and quickly play the event you want.



### Image size indicator

The size of image may be effected due to different settings for video attributes (brightness, contrast, etc.).

- Option for recycling the input-triggered events (Never recycle function)



### Backlight compensation

You may now apply backlight compensation in ViewLog, in order to compensate dark images resulting from backlight.



### Export a video footage within a specified time range

In the new version of ViewLog, you can export a specified time frame within a video stream by dragging the time lines to assign the starting and ending time.



#### Object Search

The Object Search allows you to specify a zone on an image and perform a search based on any motion, missing object, or unattended object events occurred within that zone. It can also perform the same counting function as the Counter in Main System.



#### IR Remote Control

Use IR Remote Control to operate frequently used operations, such as recording and playback, in Main system and ViewLog.

## **Major Features**

- 640 X 480 recording and display resolution
- Mpeg 4 / Wavelet compression technology
- Alarm to E-mail (Jpeg or text message)
- Embedded I/O devices control
- Embedded PTZ control panel
- PTZ dome to a preset position on alarm activation
- Samsung SCC-641 / 643 PTZ dome support
- Build-in web server
- Digital watermark authentication
- Multi level passwords protection
- Screen pop-up on motion or alarm activation
- Support dynamic IP address
- Video lost detection
- On screen video lost message
- Video de-interlace filter
- Video auto gain controller
- Video scaling filter
- Use Microsoft Remote Desktop to control another GV-System
- AVI repair utility
- Object counting
- Object search
- Thumbnail search
- Index search
- System log
- Twin DVR
- Dynamic DNS support
- Managing multiple servers in a WebCam
- Point of Sale (POS) Integration
- Geo MPEG4
- Remote access log database over WebCam

## **Recording Mode**

- Motion detection recording
- Round-the-clock recording
- Schedule recording
- Day-Night recording mode
- Pre alarm and post alarm recording
- Pre motion and post motion recording

## **Monitor Viewing**

- Independent video brightness and contrast control
- Selectable motion detection sensitivity and masking area for each camera
- Independent recording quality and frame rate adjustment

## **Camera Configuration**

- Independent video brightness and contrast control
- Selectable motion detection sensitivity and masking area for each camera
- Independent recording quality and frame rate adjustment

## **Remote Monitoring Software- Remote View**

- IP Multicast
- WebCam
- Remote Playback system
- G-View for Win CE PDA
- i-Mode